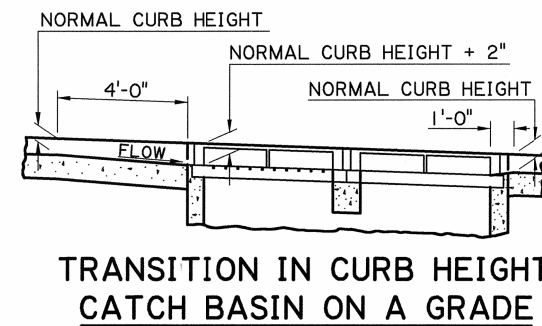
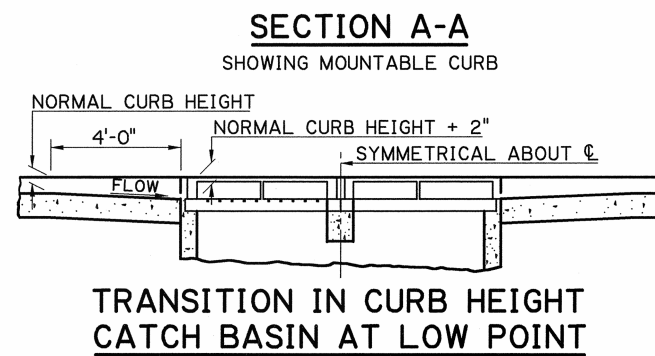
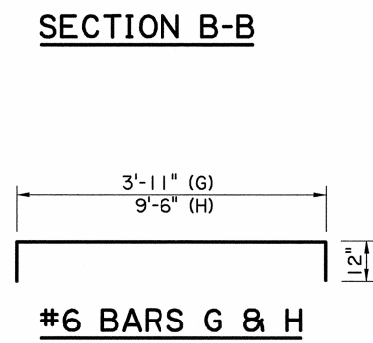
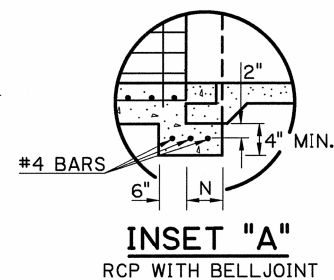
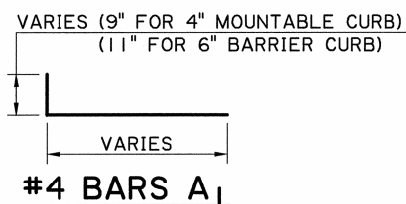
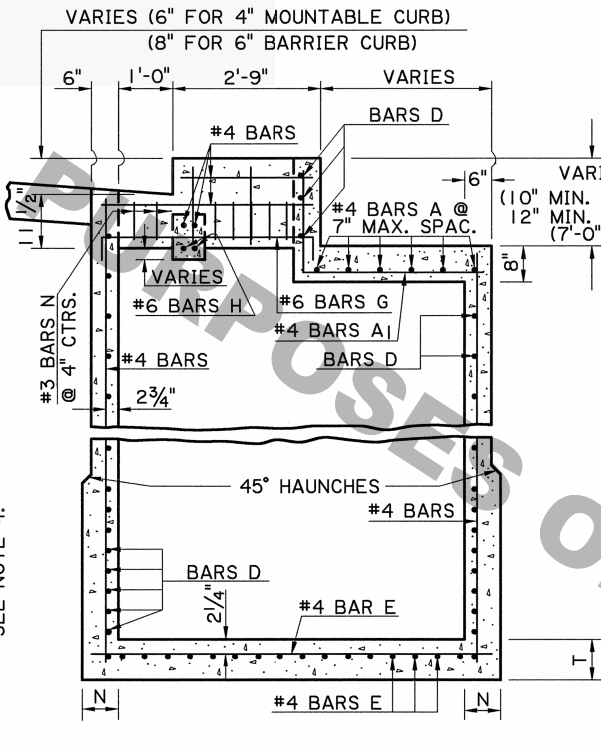
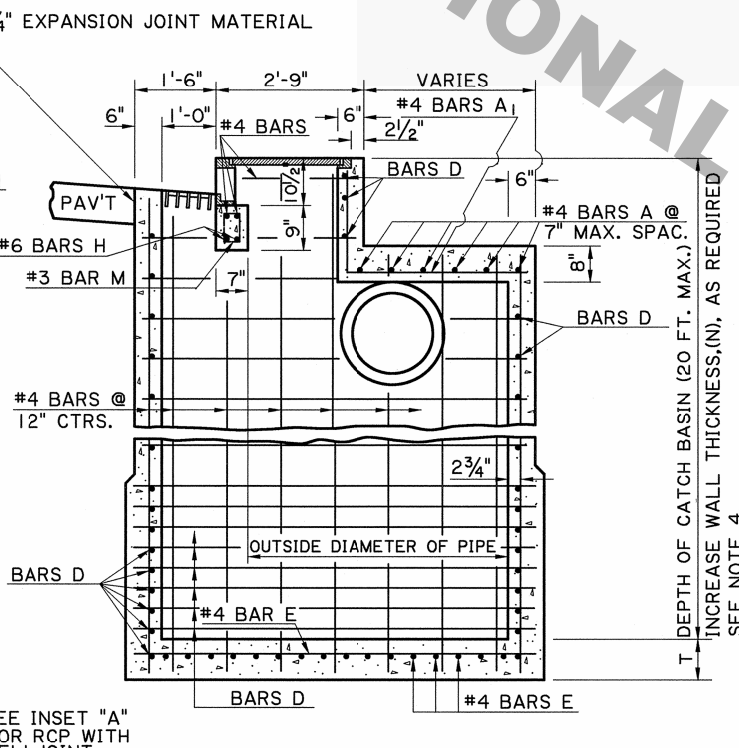
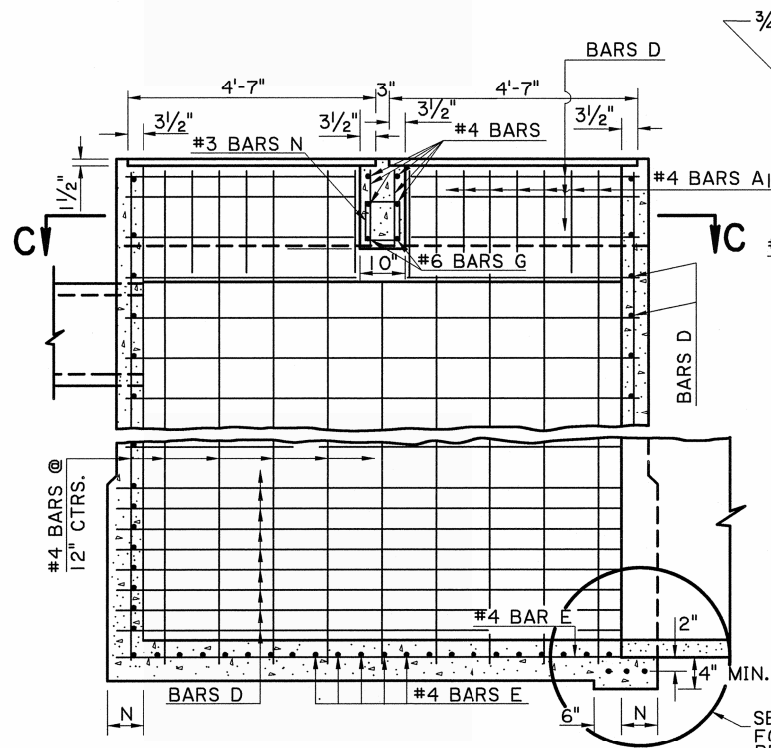
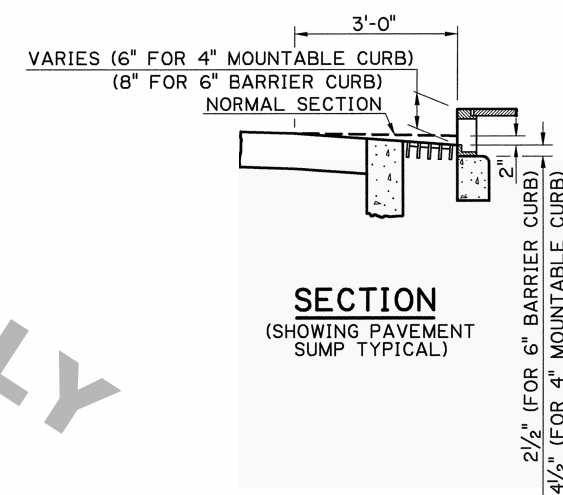
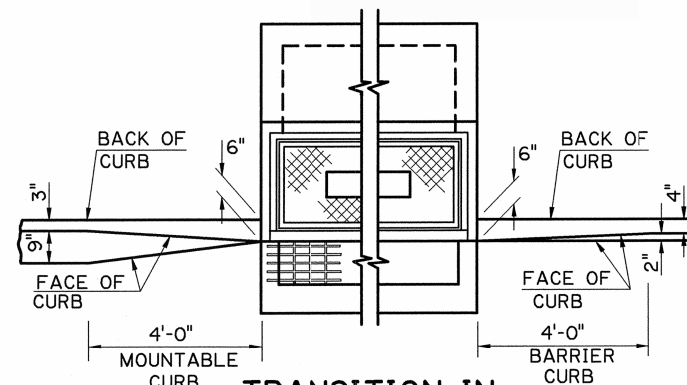


GENERAL NOTES:

- CATCH BASIN IS DESIGNED ACCORDING TO 4TH ED. 2007 AASHTO LRFD PROCEDURES. SECTION 702 OF THE DOTD STANDARD SPECIFICATIONS SHALL APPLY.
- CONCRETE: ALL CONCRETE SHALL BE CLASS "M" MINOR STRUCTURE. ALL EXPOSED EDGES SHALL BE CHAMFERED 3/4 IN. EXCEPT AS NOTED.
- REINFORCING STEEL: REINFORCING STEEL SHALL BE GRADE 60. DIMENSIONS ARE TO BAR CENTERS. MINIMUM COVER FOR REINFORCING BARS SHALL BE 2 IN. CLEAR UNLESS SHOWN OTHERWISE.
- AS DEPTH INCREASES THE WALL AND SLAB THICKNESSES AND REINFORCEMENT SHOULD BE INCREASED AS SHOWN IN THE TABLE BELOW. THE CONTRACTOR HAS THE OPTION TO PROVIDE THE MAXIMUM REQUIRED WALL THICKNESS FOR THE FULL DEPTH OF THE STRUCTURE.
- FOR DETAILS OF METAL COVER, FRAME, AND GRATE, SEE STD. PLAN MC-01, TYPE H & TYPE I.
- THE CONTRACTOR WILL NOT POUR ABOVE THE BOTTOM OF THE SLAB UNTIL THE PAVING ADJACENT TO THE CATCH BASIN HAS BEEN COMPLETED.

DEPTH RANGE	WALLS			BOTTOM SLAB		
	N	D BARS	T	E BARS		
	IN.	SIZE	SPAC., IN.	IN.	SIZE	SPAC., IN.
0' TO 7'	6.0	4	4.5	6.0	4	7.5
7'-1" TO 11'	7.0	4	5.0	6.5	4	5.5
11'-1" TO 18'	8.0	5	5.5	7.5	4	4.5
18'-1" TO 20'	8.5	5	5.5	8.0	4	4.0



SHEET NUMBER		PARISH		DESIGNED		CHECKED		PA		DATE		SHEET		DATE		SHEET	
10-7-10		Revised To 2007 AASHTO LRFD Procedures		MH		JCM		BY		DATE		7-16-97		1 OF 1		7-16-97	
11-2-00		Converted Metric CB-08M to English CB-08		JCM		JCM		BY		DATE		7-16-97		1 OF 1		7-16-97	
10-7-10		Revised To 2007 AASHTO LRFD Procedures		MH		JCM		BY		DATE		7-16-97		1 OF 1		7-16-97	
11-2-00		Converted Metric CB-08M to English CB-08		JCM		JCM		BY		DATE		7-16-97		1 OF 1		7-16-97	
10-7-10		Revised To 2007 AASHTO LRFD Procedures		MH		JCM		BY		DATE		7-16-97		1 OF 1		7-16-97	
11-2-00		Converted Metric CB-08M to English CB-08		JCM		JCM		BY		DATE		7-16-97		1 OF 1		7-16-97	
10-7-10		Revised To 2007 AASHTO LRFD Procedures		MH		JCM		BY		DATE		7-16-97		1 OF 1		7-16-97	
11-2-00		Converted Metric CB-08M to English CB-08		JCM		JCM		BY		DATE		7-16-97		1 OF 1		7-16-97	
10-7-10		Revised To 2007 AASHTO LRFD Procedures		MH		JCM		BY		DATE		7-16-97		1 OF 1		7-16-97	
11-2-00		Converted Metric CB-08M to English CB-08		JCM		JCM		BY		DATE		7-16-97		1 OF 1		7-16-97	
10-7-10		Revised To 2007 AASHTO LRFD Procedures		MH		JCM		BY		DATE		7-16-97		1 OF 1		7-16-97	
11-2-00		Converted Metric CB-08M to English CB-08		JCM		JCM		BY		DATE		7-16-97		1 OF 1		7-16-97	
10-7-10		Revised To 2007 AASHTO LRFD Procedures		MH		JCM		BY		DATE		7-16-97		1 OF 1		7-16-97	
11-2-00		Converted Metric CB-08M to English CB-08		JCM		JCM		BY		DATE		7-16-97		1 OF 1		7-16-97	
10-7-10		Revised To 2007 AASHTO LRFD Procedures		MH		JCM		BY		DATE		7-16-97		1 OF 1		7-16-97	
11-2-00		Converted Metric CB-08M to English CB-08		JCM		JCM		BY		DATE		7-16-97		1 OF 1		7-16-97	
10-7-10		Revised To 2007 AASHTO LRFD Procedures		MH		JCM		BY		DATE		7-16-97		1 OF 1		7-16-97	
11-2-00		Converted Metric CB-08M to English CB-08		JCM		JCM		BY		DATE		7-16-97		1 OF 1		7-16-97	
10-7-10		Revised To 2007 AASHTO LRFD Procedures		MH		JCM		BY		DATE		7-16-97		1 OF 1		7-16-97	
11-2-00		Converted Metric CB-08M to English CB-08		JCM		JCM		BY		DATE		7-16-97		1 OF 1		7-16-97	
10-7-10		Revised To 2007 AASHTO LRFD Procedures		MH		JCM		BY		DATE		7-16-97		1 OF 1		7-16-97	
11-2-00		Converted Metric CB-08M to English CB-08		JCM		JCM		BY		DATE		7-16-97		1 OF 1		7-16-97	
10-7-10		Revised To 2007 AASHTO LRFD Procedures		MH		JCM		BY		DATE		7-16-97		1 OF 1		7-16-97	
11-2-00		Converted Metric CB-08M to English CB-08		JCM		JCM		BY		DATE		7-16-97		1 OF 1		7-16-97	
10-7-10		Revised To 2007 AASHTO LRFD Procedures		MH		JCM		BY		DATE		7-16-97		1 OF 1		7-16-97	
11-2-00		Converted Metric CB-08M to English CB-08		JCM		JCM		BY		DATE		7-16-97		1 OF 1		7-16-97	
10-7-10		Revised To 2007 AASHTO LRFD Procedures		MH		JCM		BY		DATE		7-16-97		1 OF 1		7-16-97	
11-2-00		Converted Metric CB-08M to English CB-08		JCM		JCM		BY		DATE		7-16-97		1 OF 1		7-16-97	
10-7-10		Revised To 2007 AASHTO LRFD Procedures		MH		JCM		BY		DATE		7-16-97		1 OF 1		7-16-97	
11-2-00		Converted Metric CB-08M to English CB-08		JCM		JCM		BY		DATE		7-16-97		1 OF 1		7-16-97	
10-7-10		Revised To 2007 AASHTO LRFD Procedures		MH		JCM		BY		DATE		7-16-97		1 OF 1		7-16-97	
11-2-00		Converted Metric CB-08M to English CB-08		JCM		JCM		BY		DATE		7-16-97		1 OF 1		7-16-97	
10-7-10		Revised To 2007 AASHTO LRFD Procedures		MH		JCM		BY		DATE		7-16-97		1 OF 1		7-16-97	
11-2-00		Converted Metric CB-08M to English CB-08		JCM		JCM		BY		DATE		7-16-97		1 OF 1		7-16-97	
10-7-10		Revised To 2007 AASHTO LRFD Procedures		MH		JCM		BY		DATE		7-16-97		1 OF 1		7-16-97	
11-2-00		Converted Metric CB-08M to English CB-08		JCM		JCM		BY		DATE		7-16-97		1 OF 1		7-16-97	
10-7-10		Revised To 2007 AASHTO LRFD Procedures		MH		JCM		BY		DATE		7-16-97		1 OF 1		7-16-97	
11-2-00		Converted Metric CB-08M to English CB-08		JCM		JCM		BY		DATE		7-16-97		1 OF 1		7-16-97	
10-7-10		Revised To 2007 AASHTO LRFD Procedures		MH		JCM		BY		DATE		7-16-97		1 OF 1		7-16-97	
11-2-00		Converted Metric CB-08M to English CB-08		JCM		JCM		BY		DATE		7-16-97		1 OF 1		7-16-97	
10-7-10		Revised To 2007 AASHTO LRFD Procedures		MH		JCM		BY		DATE		7-16-97		1 OF 1		7-16-97	
11-2-00		Converted Metric CB-08M to English CB-08		JCM		JCM		BY		DATE		7-16-97		1 OF 1		7-16-97	
10-7-10		Revised To 2007 AASHTO LRFD Procedures		MH		JCM		BY		DATE		7-16-97		1 OF 1		7-16-97	
11-2-00		Converted Metric CB-08M to English CB-08		JCM		JCM		BY		DATE		7-16-97		1 OF 1		7-16-97	
10-7-10		Revised To 2007 AASHTO LRFD Procedures		MH		JCM		BY		DATE		7-16-97		1 OF 1		7-16-97	
11-2-00		Converted Metric CB-08M to English CB-08		JCM		JCM		BY		DATE		7-16-97		1 OF 1		7-16-97	
10-7-10		Revised To 2007 AASHTO LRFD Procedures		MH		JCM		BY		DATE		7-16-97		1 OF 1		7-16-97	
11-2-00		Converted Metric CB-08M to English CB-08		JCM		JCM		BY		DATE		7-16-97		1 OF 1		7-16-97	
10-7-10		Revised To 2007 AASHTO LRFD Procedures		MH		JCM		BY		DATE		7-16-97		1 OF 1		7-16-97	
11-2-00		Converted Metric CB-08M to English CB-08		JCM		JCM		BY		DATE		7-16-97		1 OF 1		7-16-97	
10-7-10		Revised To 2007 AASHTO LRFD Procedures		MH		JCM		BY		DATE		7-16-97		1 OF 1		7-16-97	
11-2-00		Converted Metric CB-08M to English CB-08		JCM		JCM		BY		DATE		7-16-97		1 OF 1		7-16-97	
10-7-10		Revised To 2007 AASHTO LRFD Procedures		MH		JCM		BY		DATE		7-16-97		1 OF 1		7-16-97	
11-2-00		Converted Metric CB-08M to English CB-08		JCM		JCM		BY		DATE		7-16-97		1 OF 1		7-16-97	
10-7-10		Revised To 2007 AASHTO LRFD Procedures		MH		JCM		BY		DATE		7-16-97		1 OF 1		7-16-97	
11-2-00		Converted Metric CB-08M to English CB-08		JCM		JCM		BY		DATE		7-16-97		1 OF 1		7-16-97	
10-7-10		Revised To 2007 AASHTO LRFD Procedures		MH		JCM		BY		DATE		7-16-97		1 OF 1		7-16-97	
11-2-00		Converted Metric CB-08M to English CB-08		JCM		JCM		BY		DATE		7-16-97		1 OF 1		7-16-97	
10-7-10		Revised To 2007 AASHTO LRFD Procedures		MH		JCM		BY		DATE		7-16-97		1 OF 1		7-16-97	
11-2-00		Converted Metric CB-08M to English CB-08		JCM		JCM		BY		DATE		7-16-97		1 OF 1		7-16-97	
10-7-10		Revised To 2007 AASHTO LRFD Procedures		MH		JCM		BY		DATE		7-16-97		1 OF 1		7-16-97	
11-2-00		Converted Metric CB-08M to English CB-08		JCM		JCM		BY		DATE		7-16-97		1 OF 1		7-16-97	
10-7-10		Revised To 2007 AASHTO LRFD Procedures		MH		JCM		BY		DATE		7-16-97		1 OF 1		7-16-97	
11-2-00		Converted Metric CB-08M to English CB-08		JCM		JCM		BY		DATE		7-16-97		1 OF 1		7-16-97	
10-7-10		Revised To 2007 AASHTO LRFD Procedures		MH		JCM		BY		DATE		7-16-97		1 OF 1		7-16-97	
11-2-00		Converted Metric CB-08M to English CB-08		JCM		JCM		BY		DATE		7-16-97		1 OF 1		7-16-97	
10-7-10		Revised To 2007 AASHTO LRFD Procedures		MH		JCM		BY		DATE		7-16-97		1 OF 1		7-16-97	
11-2-00		Converted Metric CB-08M to English CB-08		JCM		JCM		BY		DATE		7-16-97		1 OF 1		7-16-97	
10-7-10		Revised To 2007 AASHTO LRFD Procedures		MH		JCM		BY		DATE		7-16-97		1 OF 1		7-16-97	
11-2-00		Converted Metric CB-08M to English CB-08		JCM		JCM		BY		DATE		7-16-97		1 OF 1		7-16-97	
10-7-10		Revised To 2007 AASHTO LRFD Procedures		MH		JCM		BY		DATE		7-16-97		1 OF 1		7-16-97	
11-2-00		Converted Metric CB-08M to English CB-08		JCM		JCM		BY		DATE		7-16-97		1 OF 1		7-16-97	
10-7-10		Revised To 2007 AASHTO LRFD Procedures		MH		JCM		BY		DATE		7-16-97		1 OF 1		7-16-97	
11-2-00		Converted Metric CB-08M to English CB-08		JCM		JCM		BY		DATE		7-16-97		1 OF 1		7-16-97	
10-7-10		Revised To 2007 AASHTO LRFD Procedures		MH		JCM		BY		DATE		7-16-97		1 OF 1		7-16-97	
11-2-00		Converted Metric CB-08M to English CB-08		JCM		JCM		BY		DATE		7-16-97		1 OF 1		7-16-97	
10-7-10		Revised To 2007 AASHTO LRFD Procedures		MH		JCM		BY		DATE		7-16-97		1 OF 1		7-16-97	
11-2-00		Converted Metric CB-08M to English CB-08		JCM		JCM		BY		DATE		7-16-97		1 OF 1			